

Review

The substrate recognition mechanisms in chaperonins

Paulino Gómez-Puertas¹, Jaime Martín-Benito², José L. Carrascosa², Keith R. Willison³ and José M. Valpuesta^{2*}

¹Centro de Astrobiología (CSIC/INTA). Ctra Torrejón-Ajalvir, Km 4, Torrejón de Ardoz, 28850 Madrid, Spain

²Centro Nacional de Biotecnología, CSIC, Campus Universidad Autónoma de Madrid, 28049 Madrid, Spain

³Cancer Research UK Centre for Cell and Molecular Biology, Institute of Cancer Research, Chester Beatty Laboratories, 237 Fulham Road, Chelsea, London SW3 6JB, UK

Chaperonins are a family of proteins devoted to assisting the folding of other proteins. They are large oligomers assembled into ring structures that enclose a cavity in which folding takes place. For this process to occur, the chaperonin must first recognize and interact with the unfolded polypeptide, then undergo a conformational change upon nucleotide binding that results in the closure of the cavity which in turn mediates the folding reaction inside the cavity. Although this general mechanism seems to apply to every chaperonin studied so far, there exist two different modes of interaction between the chaperonin and the substrate. The first occurs mainly through the interaction between the exposed hydrophobic residues of the unfolded polypeptides and those of the chaperonin substrate binding site, as elucidated for the chaperonin GroEL from *E. coli*. The second type of mechanism has been described so far only for the cytosolic chaperonin CCT (Chaperonin Containing TCP-1) and here the interaction seems to be of a more specific nature, involving charged and polar residues in both the chaperonin and the substrate, which interacts with CCT in a structured, quasi-native conformation. Copyright © 2004 John Wiley & Sons, Ltd.

Keywords: protein folding; molecular chaperones; chaperonins; GroEL; CCT; thermosome; actin; tubulin

Received 28 July 2003; revised 22 September 2003; accepted 25 September 2003

INTRODUCTION

Although the information required for a protein to attain its native, functional conformation is stored in its amino acid sequence, protein folding is usually a problematic task in the crowded environment of the cell, where a multitude of unwanted interactions occur all the time. Nature has tried to overcome this problem by creating a large number of proteins, termed molecular chaperones, which assist in the folding of other proteins (Mogk *et al.*, 2001), mostly by protecting their aggregation-prone regions and by providing protected environments for proteins to fold by themselves. Most of these proteins are heat-shock proteins and their level of expression is greatly increased upon stress conditions which cause misfolding and/or aggregation. Among the molecular chaperones, one of the best characterized families is the chaperonins, which are found in every known organism (Ellis, 1996), although they are divided in two groups, depending on whether they are found in eubacteria and in the endosymbiotic organelles (group I; Bukau and

Horwich, 1998; Ellis and Hartl, 1999), or in archaea and the cytosol of eukarya (group II; Willison, 1999; Gutsche *et al.*, 1999; Cowan and Lewis, 2002). All chaperonins share a similar structure, i.e. they are large oligomers composed of ~60 kDa proteins built up in the shape of a toroid, usually composed of two rings placed back-to-back (Carrascosa *et al.*, 2001). Each oligomer subunit in every chaperonin has also a similar structure, divided into three domains (Braig *et al.*, 1994; Fenton *et al.*, 1994): the equatorial domain, that holds the nucleotide binding site and most of the interactions between the subunits of the same ring and those of the opposing ring; the intermediate domain, which acts as a transmitter of the conformational changes generated upon nucleotide binding between the equatorial domain and the apical domain, where the substrate binding is located.

However, both groups of chaperonins also have important differences. Whereas the ring in all group I chaperonins is composed of seven identical subunits, group II chaperonins can have octameric rings composed of one or two different subunits, nonameric rings composed of three different subunits (Gutsche *et al.*, 1999) and octameric rings composed of eight different subunits, such is the case of the cytosolic chaperonin CCT (Chaperonin Containing TCP-1, also termed TRiC or c-cpn; Frydman *et al.*, 1992; Gao *et al.*, 1992; Lewis *et al.*, 1992). Another important difference is related to the presence in group I chaperonins of a small oligomer, termed cochaperonin, which acts in conjunction with the chaperonin in the folding of proteins by capping the chaperonin cavity (Xu *et al.*, 1997). This cochaperonin is

*Correspondence to: J. M. Valpuesta, Centro Nacional de Biotecnología, CSIC, Campus Universidad Autónoma de Madrid, 28049 Madrid, Spain.

E-mail: jmv@cnb.uam.es

Contract/grant sponsor: MCYT; Fundación 'Ramón Areces'; Cancer Research UK.

Abbreviations used: ARP, actin-related protein; HDAC, histone deacetylases; HMM, heavy meromyosin subunit; PhLP, phosphatidylesterase-like protein; VHL, Von Hippel-Lindau tumour suppressor protein.

absent in group II chaperonins but its function is mimicked by an extra sequence located at the tip of the apical domain named helical protrusion (Klumpp *et al.*, 1997; Ditzel *et al.*, 1997). After the conformational changes generated upon nucleotide binding, it locks the chaperonin cavity acting like an iris (Ditzel *et al.*, 1997; Llorca *et al.*, 1999a, 2001a,b; Gutsche *et al.*, 2000; Schoehn *et al.*, 2000a,b).

Despite these differences, a very general cycle can be outlined for all chaperonins. They seem to adopt two main conformations: an ADP or nucleotide-free conformation in which the chaperonin has an open structure and a high affinity for the unfolded substrate, and an ATP-bound conformation with a closed structure and a low affinity for the substrate. Thus, unfolded polypeptides are bound by the ADP or the nucleotide-free, open conformation of the chaperonin. Subsequently, nucleotide binding induces the conformational changes leading to the closure of the cavity (either by the capping of the cochaperonin in the case of the group I chaperonins or by the extra helical protrusion in the case of group II chaperonins) and the liberation of the substrate inside the cavity, where in an isolated environment and free from unwanted interactions, it can fold using the information imprinted in its own amino acid sequence. Since this mechanism is used by group I chaperonins to assist in the folding of a multitude of proteins, the substrate recognition mechanism must be capable of recognizing the unfolded polypeptide in myriad conformations. This can only be achieved by a very generalized recognition mechanism whereby the hydrophobic residues of the unfolded polypeptide, exposed on the surface of unfolded proteins, are recognized by and interact with the hydrophobic residues of the chaperonin substrate binding region. This mechanism seems to apply to all known chaperonins, but with an important exception, the cytosolic chaperonin CCT, which uses a mechanism that relies on a more specific interaction between the substrate and the chaperonin, and where charged residues may play an important role. This article will review the nature of the substrate recognition mechanism in both group I and group II chaperonins, and will emphasize the interaction between CCT and some of its substrates, especially the cytoskeletal proteins actin and tubulin.

MECHANISM OF SUBSTRATE RECOGNITION BY GROUP I CHAPERONINS

Most of the work carried out on the structure and function of group I chaperonins has been performed with GroEL, the chaperonin from *E. coli*, and the characterization of the mechanism of substrate recognition is no exception. All kinds of techniques have been used to characterize the mechanism of substrate binding in GroEL and its localization within the structure of the oligomer, which electron microscopy studies have shown to be at the entrance of the GroEL cavity (Braig *et al.*, 1993; Chen *et al.*, 1994). The atomic structure of GroEL obtained by X-ray diffraction revealed the structure of this region, termed the apical domain (Braig *et al.*, 1994). An accompanying mutational study showed that several residues of this domain (A152,

Y199, S201, Y203, F204, L234, L237, L259 and V263), almost all of them hydrophobic in nature, are involved in substrate recognition, as their substitution diminishes or even abolishes unfolded polypeptide binding to GroEL (Fenton *et al.*, 1994). This region corresponds to α -helices H8 and H9 and an extended loop below, all located in an exposed region that faces the chaperonin channel. The fact that mutation of charged residues within this region did not abolish substrate binding led the authors to suggest that the substrate binding domain of GroEL [and of the rest of group I chaperonins, see the high degree of homology amongst them in Plate 1(A)] is located at the rim of the channel and is formed by a ring of hydrophobic residues, which seem to recognize the unfolded polypeptide [Plate 1(B)]. The hydrophobic interactions between the chaperonin and the substrate seem to be the major driving force in their recognition and binding. Biochemical experiments have shown that GroEL interacts preferentially with the side chains of hydrophobic amino acids (Richarme and Kohiyama, 1994) and other studies, again using a battery of different techniques, have also outlined the importance of the hydrophobic interactions between the chaperonin and the substrate (Hayer-Hartl *et al.*, 1994; Hlodan *et al.*, 1995; Itzhaki *et al.*, 1995; Lin *et al.*, 1995; Coyle *et al.*, 1997). However there are certain exceptions, and other types of interactions such electrostatic ones may play also an important role (Katsumata *et al.*, 1996; Aoki *et al.*, 1997; Hutchinson *et al.*, 1997).

Two atomic structures of the complex between a polypeptide and the GroEL apical domain have confirmed this region as the one involved in substrate binding (Buckle *et al.*, 1997; Chen and Sigler, 1999). Both structural studies have shown that the unfolded polypeptide chain is located in the groove between α -helices H8 and H9, interacting mostly with the hydrophobic residues that form part of the two α -helices [Plate 1(C)]. These studies also revealed that the substrate binding domain is flexible enough to accommodate different types of unfolded structures, which confirms numerous studies showing that the unfolded protein can interact with GroEL in different conformations, from structured ones (Landry and Gierash, 1991; Landry *et al.*, 1992), to partially folded conformations (Martin *et al.*, 1991; Robinson *et al.*, 1994) and completely unfolded ones (Badcoe *et al.*, 1991; Zahn *et al.*, 1994). The flexibility of the apical domain (Braig *et al.*, 1994) and its ability to recognize and to interact with different types of unfolded structures, are the basis of the high promiscuity of GroEL in the assistance to the folding of other proteins, and explains why GroEL can interact *in vivo* with at least 10% of newly synthesized polypeptides (Houry *et al.*, 1999). The range of molecular weights of GroEL substrates is large and the chaperonin can accommodate in its cavity, molecules up to 65 kDa in mass. Consequently the unfolded polypeptide, depending on its size, can interact with GroEL through multiple apical domains (Farr *et al.*, 2000).

The folding process continues through a series of steps, some of them which promote a new set of recognition processes. ATP binding induces a conformational change in the apical domain that allows the binding of the GroEL cochaperonin, GroES, which in turn generates a further conformational change in the apical domain. The interaction between GroES and GroEL is of a hydrophobic nature and

occurs through residues of an unstructured region of GroES (the 'mobile loop'; Landry *et al.*, 1993) and some of the GroEL residues also involved in substrate binding (Fenton *et al.*, 1994; Xu *et al.*, 1997). Therefore GroES binding to GroEL displaces the unfolded polypeptide into the now capped chaperonin cavity, which has been transformed into a much larger and hydrophilic channel as a result of the conformational changes generated upon ATP and GroES binding (Crouy-Chanel *et al.*, 1995; Xu *et al.*, 1997; Wang and Boisvert, 2003). Encapsulated polypeptides are now free to fold in the isolated chamber using the information encoded in their amino acid sequence, in what has been termed the 'Anfinsen cage' (Ellis, 1994). However, before the release reaction, it is possible that the conformational changes generated in GroEL might have been used to exert a stretching force on the unfolded polypeptide, thus liberating it from local energy minimum in which it might have been trapped. Thus, it is possible that GroEL assists in the folding of other proteins not only by providing them with a proper environment in the isolated chamber, but also working as an unfoldase and therefore playing a more active role in protein folding (Zahn *et al.*, 1996; Walther *et al.*, 1996; Shtilerman *et al.*, 1999; Wang and Boisvert, 2003).

MECHANISM OF SUBSTRATE RECOGNITION BY GROUP II CHAPERONINS

Contrary to studies with group I chaperonins, there is not much information on the substrate recognition mechanism in group II chaperonins and especially those of archaeal origin, usually named thermosomes because of their thermostability and heat inductibility (Phipps *et al.*, 1991). There is a great

deal of structural information on the thermosomes, obtained either from X-ray diffraction (Klumpp *et al.*, 1997; Ditzel *et al.*, 1997) or electron microscopy (Nitsch *et al.*, 1998), which reveals that the overall structure of the thermosomes is similar to that of GroEL. The major differences, also observed when comparing the primary sequence of both type of chaperonins, reside in the apical domains, which as in the case of GroEL, undergo large conformational changes during the thermosome functional cycle (Schoehn *et al.*, 2000a,b). These conformational changes are induced upon ATP binding and hydrolysis and are at the heart of the folding mechanism (Gutsche *et al.*, 2000, 2001). The two main conformations of the thermosomes, as in other chaperonins, are the open, substrate-receptive conformation, and the closed conformation, generated by the movement of the helical protrusions (Ditzel *et al.*, 1997).

Although almost nothing is known about the natural substrates of thermosomes, it is however clear that they are capable of preventing aggregation and eventually assisting in the folding of numerous proteins of mesophilic and thermophilic origin (for a review on this subject, see Gutsche *et al.*, 1999). This suggests a substrate recognition and folding mechanism similar to that of GroEL, based on the interaction between the exposed hydrophobic residues of the unfolded polypeptide and those of the chaperonin substrate binding domain. Indeed there is biochemical evidence pointing to the hydrophobic interactions as the ones driving the binding between the thermosome and the unfolded substrate (Guagliardi *et al.*, 1995). Since the overall structure of the thermosome is similar to that of GroEL, it is reasonable to suggest that the apical domain is the one hosting the substrate binding site (Gutsche *et al.*, 1999). When looking for hydrophobic regions within this domain, a cluster of hydrophobic residues is found near the

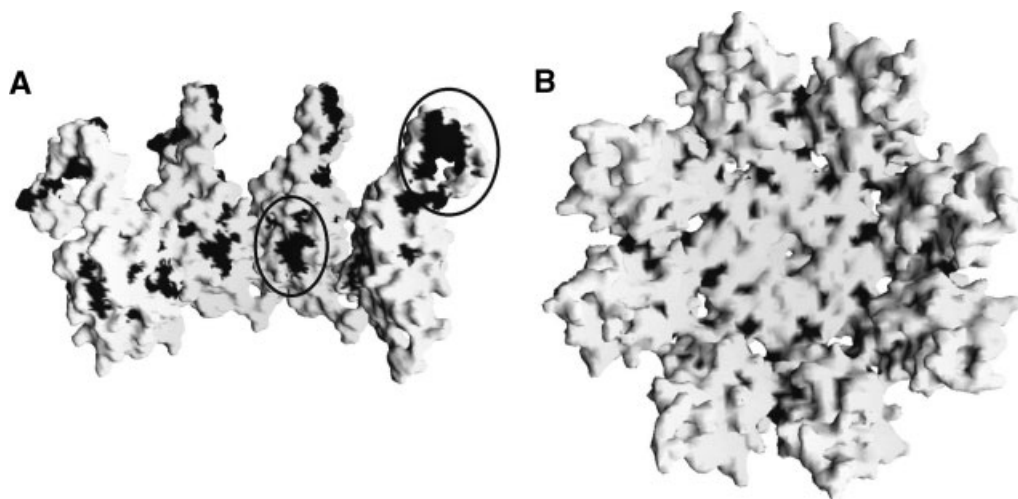


Figure 1. The structure of the apical domain of two main conformers in the thermosome. (A) A cut view of the surface of the nucleotide-free, open conformation of the thermosome, viewed from the centre of the cavity. The atomic structures of the α - and β -thermosome from *Thermoplasma acidophilum* (Ditzel *et al.*, 1997) have been modelled to fit in an approximate manner into the three-dimensional reconstruction of the structure of nucleotide-free CCT obtained by cryoelectron microscopy (Llorca *et al.*, 2000). (B) A cut section of the surface, viewed from the interior of the cavity, of the apical domains of the structure of *Thermoplasma acidophilum*, which is thought to emulate the nucleotide-bound, closed conformation. The dark regions correspond to the hydrophobic residues which in the open conformation face the cavity and which almost disappear in the closed conformation. The circles in (A) correspond to the two clusters of hydrophobic residues observed in the apical domains of the thermosomes. Images were generated with GRASP (Nicholls *et al.*, 1991).

homologous region to the GroEL substrate binding domain and at the tip of the helical protrusion [Fig. 1(A)]. These two regions are buried in the atomic structure of the thermosome from *Thermoplasma acidophilum* [Ditzel *et al.*, 1997; Fig. 1(B)]. However, this structure is the closed conformer of the chaperonin and the low-resolution reconstructions of several thermosomes in the absence of nucleotides show an open conformation where unfolded polypeptides are free to interact with the chaperonin substrate binding domain [Nitsch *et al.*, 1998; Schoehn *et al.*, 2000a,b]. Docking of the atomic structure of the thermosome monomer into some of these structures show the two hydrophobic domains facing the channel [Nitsch *et al.*, 1998; Schoehn *et al.*, 2000b; Fig. 1(A)]. According to this, the open conformation that occurs in the absence of nucleotide would recognize and bind unfolded polypeptides through the hydrophobic domains. Subsequently, ATP binding would induce the closure of the chaperonin cavity due to the $\sim 70^\circ$ clockwise movement of the apical domain and the helical protrusion placed at its tip [Fig. 1(B)]. This conformational change would induce the liberation of the unfolded polypeptide and its liberation in a sealed, isolated and now hydrophilic chamber [Ditzel *et al.*, 1997; Fig. 1(B)], allowing the polypeptide to fold by itself.

MECHANISM OF SUBSTRATE RECOGNITION BY THE CYTOSOLIC CHAPERONIN CCT

Electron microscopy has shown that CCT shares the general structural mechanism with the rest of the chaperonins, having an open conformation that recognizes and binds the substrate and a closed, ATP-induced one, where the substrate is encapsulated and folded [Plate 2(C and D); Llorca *et al.*, 1998, 1999a]. Apart from that, and even before any structural information on the nature of the interaction between CCT and its substrates was known, some kind of sequence specificity between both proteins was suspected due to the high hetero-oligomeric nature of CCT and its apparent selectivity for actins and tubulins (Kubota *et al.*, 1994). With respect to the first point, CCT is by far the most complex of all chaperonins known so far, since it is composed of eight different, albeit homologous subunits (CCT α , β , γ , δ , ε , ζ , η , θ ; CCT1-CCT8 in yeast), whose unique arrangement within a ring has been elucidated (Liou and Willison, 1997). The evolution of CCT from a simpler, less hetero-oligomeric chaperonin suggests a specialization in the function of the cytosolic chaperonin (Archibald *et al.*, 2000), a trend that seems to have been followed by a cochaperone of CCT termed prefoldin (PFD or GimC; Geissler *et al.*, 1998; Vainberg *et al.*, 1998); a small oligomer that transfers the unfolded substrate to CCT via a physical interaction between the two chaperones (Vainberg *et al.*, 1998; Martín-Benito *et al.*, 2002).

With regard to the selectivity for actins and tubulins, and although the number of proteins assisted by CCT is greater than previously thought (Dunn *et al.*, 2001; Valpuesta *et al.*, 2002), it is nevertheless evident that CCT is not a promiscuous chaperonin like GroEL and that it acts upon a limited, albeit large set of proteins. Since its discovery in

the early nineties (Frydman *et al.*, 1992; Yaffe *et al.*, 1992; Gao *et al.*, 1992; Lewis *et al.*, 1992), a large body of biochemical and structural information has been accumulated pointing to the substrate recognition mechanism of CCT being different from all the other chaperonins characterised so far. The experiments of Tian *et al.* (1995a) revealed that although the eukaryotic CCT substrates, actin and tubulin, could be recognized by GroEL in their unfolded forms, this bacterial chaperonin was not able to fold them. In fact, both cytoskeletal proteins have a stringent requirement for CCT to obtain their native conformations (Chen *et al.*, 1993; Rommelaere *et al.*, 1993), which suggests a specific interaction between these two proteins and the cytosolic chaperonin.

The conformation of the CCT-bound actin and tubulin molecules

The nature of the CCT-bound actin and tubulin conformations has been studied by many groups and the first thing that emerges is that the two proteins do not adopt any kind of unstructured conformation like the case of the GroEL substrates, but rather some sort of defined, quasi-native conformation (Melki and Cowan, 1994; Tian *et al.*, 1995b; Lewis *et al.*, 1996; Dobrzynski *et al.*, 1996), ready to undergo the final stage in their folding process upon the ATP-induced action of CCT. The intermediate folding conformation of actin and tubulin is therefore acquired before the interaction with the cytosolic chaperonin, either by themselves or with the help of other chaperones like PFD, and this would explain the slow formation of these intermediates (Melki and Cowan, 1994). The three-dimensional reconstructions of the CCT-actin and CCT-tubulin complexes carried out by cryoelectron microscopy [Plate 2(C) and (E)] reveal that both cytoskeletal proteins interact with CCT in defined conformations, with both molecules crossing the chaperonin cavity and interacting with subunits in opposed regions of the channel (Llorca *et al.*, 1999b, 2000). The two cytoskeletal proteins have the common feature of being composed of two topological domains which are locked together through a nucleotide binding site [Kabsch *et al.*, 1990; Nogales *et al.*, 1998a; Plate 2(A) and (B)]. Docking of the atomic structures of both proteins into their respective volumes of the CCT-substrate complex suggests that the two proteins have reached a conformation close to the native one [Plate 2(C) and (E)], albeit an open conformation susceptible to proteolysis (Grantham *et al.*, 2000) in which the two domains are separated from each other and interact with opposing regions of the CCT cavity (Llorca *et al.*, 2000).

Characterization of the CCT substrate-binding regions

As in other type of studies regarding CCT, most of what is known comes from the experiments performed with actin and tubulin, which have shown that both cytoskeletal proteins interact with specific CCT subunits. The combined results obtained with the docking above mentioned and the immunomicroscopy carried out with CCT-actin and CCT-tubulin complexes (and with complexes of CCT and fragments of the two proteins labelled with antibodies against specific CCT subunits) reveal that actin and tubulin interact

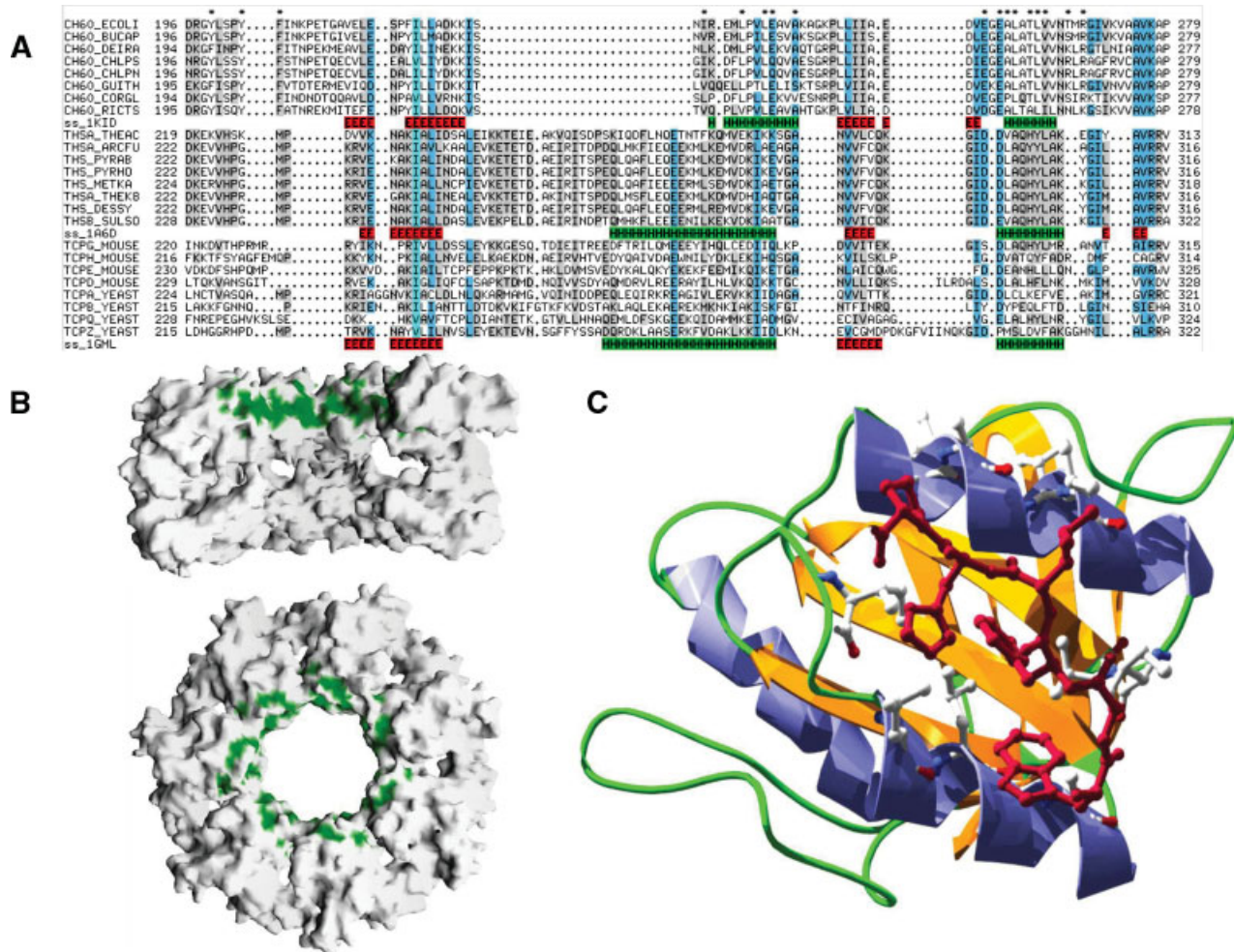


Plate 1. Structural features of chaperonins. (A) Structure-based alignment of the apical domains of group I and II chaperonins. Using the DALI comparison algorithm (Holm and Sander, 1993), several apical domain sequences of GroEL-like chaperonins (top), thermosomes (middle) and the eight CCT subunits (bottom) have been aligned. The secondary structures depicted for the three types of chaperonins (green boxes correspond to α -helices and red boxes to β -strands) correspond to the elements found in the structures of *Escherichia coli* GroEL (PDB code 1KID; Buckle *et al.*, 1997), the thermosome of *Thermoplasma acidophilum* (PDB code 1A6D; Ditzel *et al.*, 1997) and the mouse CCT γ (PDB code 1GML; Pappenberger *et al.*, 2002). Residues are coloured according to the degree of residue conservation (higher, blue; lower, white). Asterisks indicate the position of the residues of GroEL postulated to be involved in the binding of peptide substrates (Fenton *et al.*, 1994; Buckle *et al.*, 1997). (B) Cut side view (above) and top view (below) of one of the rings of the atomic structure of GroEL (Braig *et al.*, 1994), showing in green the hydrophobic residues located at the entrance of the cavity and involved in substrate binding. (C) Ribbon plot of the structure of the apical domain of GroEL (PDB code: 1KID, interacting with a peptide) (in magenta). Residues shown by Buckle *et al.* (1997) to be involved in the interaction with the unfolded peptide localize mainly in the two α -helices and are displayed in ball-and-stick representation.

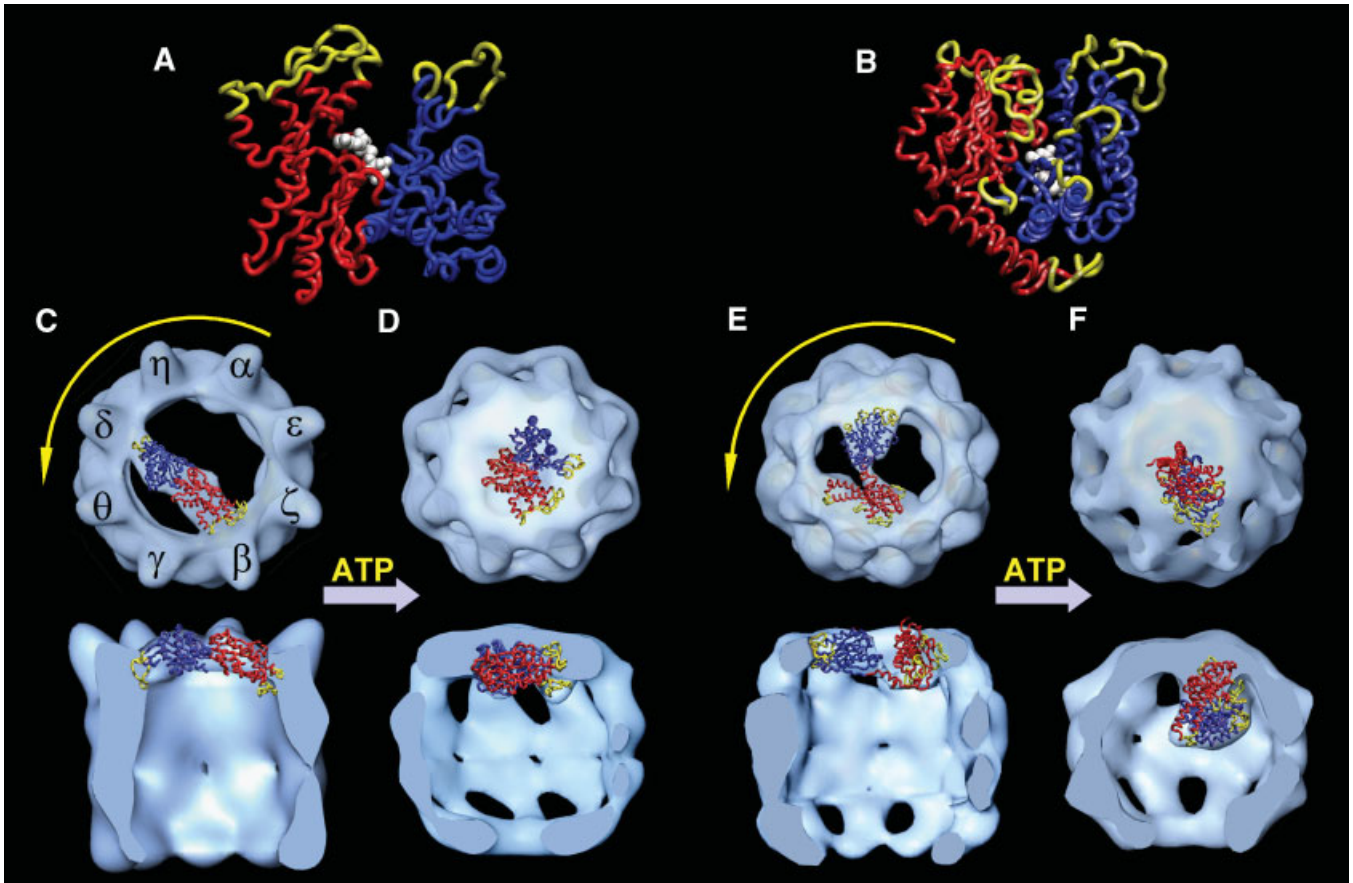


Plate 2. Interaction between CCT and the unfolded actin and tubulin, based in the cryoelectron microscopy studies performed by Llorca *et al.* (1999b, 2000, 2001b). (A) The atomic structure of actin (Kabsch *et al.*, 1990). The yellow domains correspond to the putative CCT-binding sites. The two topological domains of actin have been historically termed small and large domains, and correspond respectively to the domains coloured blue and red. The small domain is composed mainly of the N-terminal region, although a small stretch of residues of the C-terminal sequence (the last 35 residues) are also located in the small domain. (B) The atomic structure of tubulin, (Nogales *et al.*, 1998a). The color codes for N-terminal domain, C-terminal domain and the putative CCT-binding sites are the same as used for actin in (A). (C) and (E) The three-dimensional reconstructions of the CCT–actin and CCT–tubulin complexes, respectively, in the nucleotide-free, open conformation, viewed from the top (top image) and a from a side, cut view (bottom image). (D) and (F) The three-dimensional reconstructions of the CCT–actin and CCT–tubulin complexes, respectively, in the presence of nucleotide, which generates the closed conformation of CCT where folding takes place. The atomic structures of actin and tubulin have been docked in all four cases into the masses of the actin and tubulin components of the reconstructed complexes. In the nucleotide-free form, the atomic structures have been opened across their respective hinges to fit their reconstructed mass. In all the images, the actin and tubulin molecules have been coloured respectively as in (A) and (B). Yellow arrows indicate the sequential conformational change in the CCT subunits induced by ATP binding, as proposed by Lin and Sherman (1997). Part of this figure is a modified version of Fig. 8 from Llorca *et al.* (2001b). The ‘sequential allosteric ring’ mechanism in the eukaryotic chaperonin-assisted folding of actin and tubulin. *EMBO J.* **20**: 4065–4075. reproduced by permission from Oxford University Press.

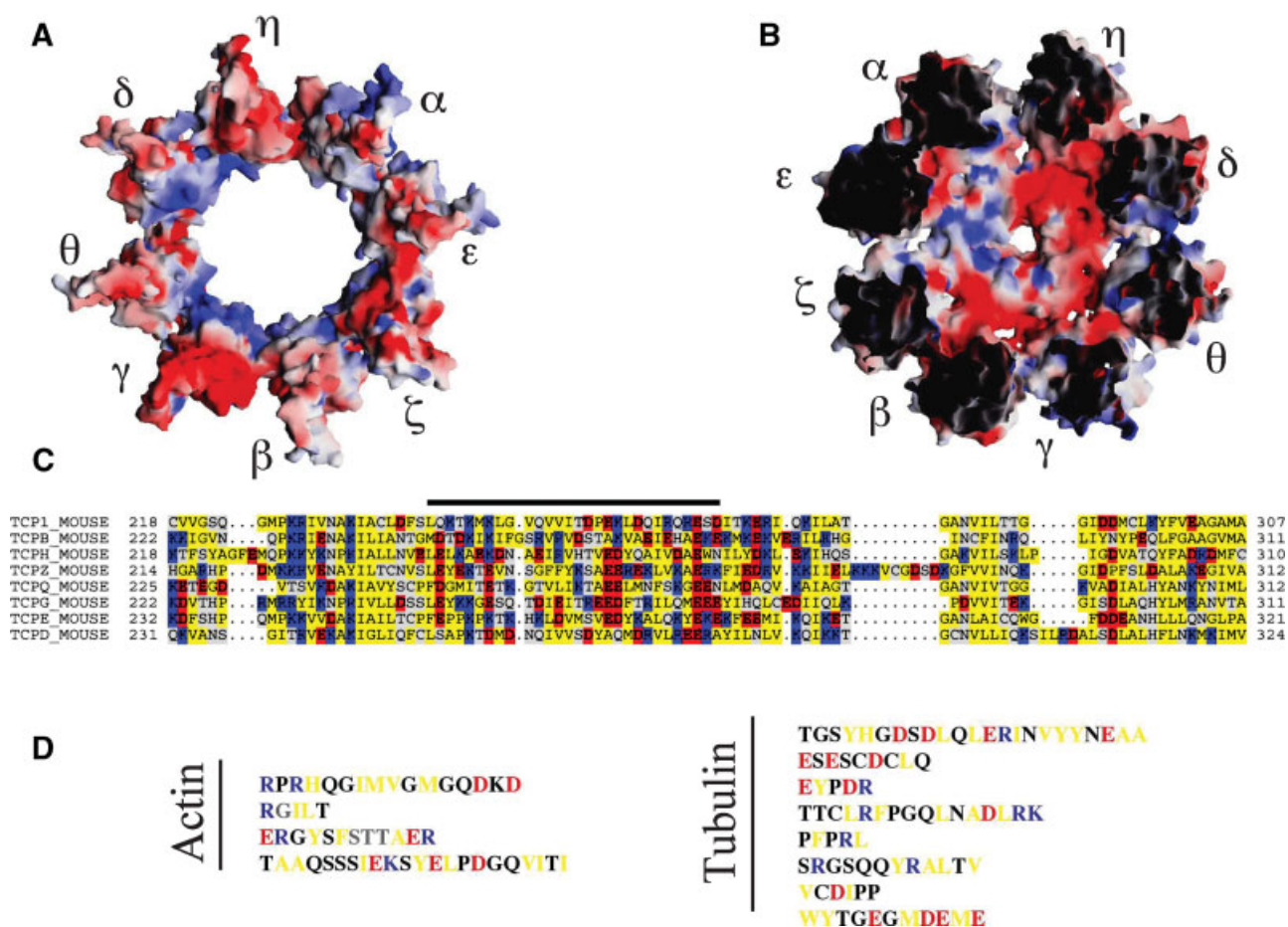


Plate 3. Binding determinants in CCT, actin and tubulin. (A) A model of the atomic structure of CCT in its nucleotide-free, open conformation. The model has been constructed using the atomic structure of the CCT γ apical domain (Pappenberger *et al.*, 2002) and the other subunits modelled according to this structure and their respective sequences, by homology modelling techniques using the program Swiss-Pdb Viewer and the SWISS-MODEL server facilities (Guex and Peitsch, 1997; www.expasy.ch/swissmod/SWISS-MODEL.html), the DALI comparison algorithm (Holm and Sander, 1993) and fitted into the three-dimensional reconstruction of nucleotide-free CCT obtained by cryoelectron microscopy (Llorca *et al.*, 2000). The CCT subunits are viewed from outside and above the cavity. (B) A model of the atomic structure of CCT in its nucleotide-bound, closed conformation. The model has been constructed fitting the atomic models of the CCT subunits in the atomic structure of the thermosome from *Thermoplasma acidophilum* (Ditzel *et al.*, 1997). The CCT subunits are viewed from inside the cavity, looking upwards from the equator. In both models, the charged surfaces (negatively charged residues in red, positively charged residues in blue) were generated using GRASP (Nichols *et al.*, 1991). (C) Sequence alignment of the apical domain of the mouse CCT subunits that shows the charged nature of the helical protrusions (marked with a black line) and the regions that flank them (negatively charged residues in red, positively charged residues in blue and hydrophobic residues in yellow). (D) The CCT-binding domains in actin and β -tubulin, according to Llorca *et al.* (2001a), Hynes and Willison (2000) and Ritco-Vonsovici and Willison (2000). Colouring code as in (C), with the hydrophilic residues in black.

with specific CCT subunits using two modes of interaction (Llorca *et al.*, 1999b, 2000). In the case of actin [Plate 2(C)], the protein, in the open and quasi-native conformation, binds with the small domain (Kabsch *et al.*, 1990) to CCT δ and with the large domain to CCT β or CCT ϵ . In the case of tubulin [Plate 2(E)], binding to CCT is more complex and involves the interaction of either its N-terminal domain with CCT α and CCT η and its C-terminal domain with CCT β , CCT γ and CCT θ , or its N-terminal domain with CCT δ and CCT θ and its C-terminal domain with CCT ϵ , CCT ζ and CCT β .

The three-dimensional reconstructions of the CCT–actin and CCT–tubulin complexes have also shed some light on the localisation of the CCT substrate-binding region [bottom images in Plate 2(C) and (E)]. Albeit at low resolution (25–30 Å), the two three-dimensional reconstructions show actin and tubulin binding to the upper part of the apical domain, just below the helical protrusion in the case of actin, and encompassing part of this protrusion in the case of tubulin, which seems to interact with a much larger area of the chaperonin apical domain (Llorca *et al.*, 2000). Interestingly, this region coincides with the region where Archibald *et al.* (2001), performing phylogenetic analyses on a large number of CCT sequences from different organisms, have located a cluster of subunit-specific conserved residues that very likely play a role in substrate recognition and interaction (Pappenberger *et al.*, 2002). Most of these residues are charged ones [Plate 3(C)], and not hydrophobic like the ones described in GroEL to be involved in substrate interaction. This is another point that signals that CCT for the substrate recognition mechanism is different from that of other chaperonins, a mechanism based on specific interactions between the substrate and the chaperonin.

Characterization of the CCT-binding sites of actin and tubulin

Several biochemical and structural studies have been carried out to try to characterize the actin and tubulin domains involved in CCT binding, and what emerges from them is that both cytoskeletal proteins interact with the cytosolic chaperonin through several domains acting in a cooperative way. In the case of actin, a biochemical study first pointed to three regions, those encompassed by residues 125–179, 244–285 and 340–375, as involved in CCT binding (Rommelaere *et al.*, 1999). Subsequently, a screening study using actin peptide arrays pointed to three different binding regions (sites I, II and III; Hynes and Willison, 2000; McCormack *et al.*, 2001a). Two of these regions are located at the tips of the small and large domains [Plate 2(A)] and coincide with a docking analysis of the actin molecule bound to CCT in the three-dimensional reconstruction of a CCT–actin complex carried out by cryoelectron microscopy (Llorca *et al.*, 2001a). This analysis, combined with immunomicroscopy experiments performed with complexes formed between CCT and actin or a chimera formed with a fragment of the small domain bound to residues 1–168 of human Ha-Ras, has allowed the identification of the actin sequences and the CCT subunits involved in CCT:actin interaction (Llorca *et al.*, 1999b, 2001a). The results

obtained point to four loops exposed on the surface of the native structure [Plate 2(A) and 3(D)]. Two of them (R37–D51 and R62–T66) are placed at the tip of small domain and interact with CCT δ , and the other two (E195–R206 and T229–I250) are located at the tip of the large domain and interact with either CCT β or CCT ϵ .

In the case of tubulin, the interaction is more complex, and all the studies carried out so far show that tubulin interacts with CCT through several domains distributed along its entire sequence (Dobrzynski *et al.*, 1996, 2000; Rommelaere *et al.*, 1999; Ritco-Vonsovici and Willison, 2000; Llorca *et al.*, 2000, 2001a). A screening study using peptide arrays covering the sequences of α -, β - and γ -tubulin revealed several CCT-binding sites in both the N- and C-terminal domains (Ritco-Vonsovici and Willison, 2000), and most of these sites are corroborated by a docking analysis of the β -tubulin molecule in the three-dimensional reconstruction of a CCT–tubulin complex carried out by cryoelectron microscopy (Llorca *et al.*, 2001b). This analysis, in combination with immunomicroscopy experiments performed with complexes formed between CCT and tubulin or chimeras formed with various tubulin fragments bound to residues 1–168 of human Ha-Ras, has suggested which tubulin sequences and CCT subunits are involved in CCT–tubulin interaction [Llorca *et al.*, 2000; Plate 2(B) and 3(D)]. All these proposed tubulin CCT-binding sites are placed in loops exposed on the surface of the native protein [Nogales *et al.*, 1998a; Plate 2(B)] and bind to CCT using two modes of interaction. Three of these binding sites are located at the N-terminal domain [T33–A57, S126–Q133 and E160–R164; Plate 3(D)] and, according to immunomicroscopy experiments, the sequence T33–A57 would interact with CCT α or CCT δ , and the sequences S126–Q133 and E160–R164 would interact with CCT η or CCT θ (Llorca *et al.*, 2000). In the C-terminal domain, the interaction is even more complex and there are five putative CCT-binding sites, those loops encompassed by sequences T239–K254, P261–H266, S277–V288, V355–P359 and W407–E417, which interact with different CCT subunits in two possible modes of interaction: loops T239–K254 and P261–H266 would interact with CCT ζ or CCT γ , loops S277–V288 and V355–P359 would interact with CCT ϵ or CCT β , and loop W407–E417 would interact with CCT β or CCT θ (Llorca *et al.*, 2000).

Although previous studies have suggested that the tubulin binding sites have a weak binding affinity, a common consensus exists for a ‘hot spot’ in the so called M loop (residues S277–V288; located between β -strand 7 and α -helix 9 of the tubulin structure; Nogales *et al.*, 1998b) that would possess a higher binding affinity (Dobrzynski *et al.*, 1996, 2000; Rommelaere *et al.*, 1999; Ritco-Vonsovici and Willison, 2000). In fact, a chimera made of a fragment of the first 168 residues of Ha-Ras protein and a tubulin fragment encompassing this loop has a comparable binding affinity to the complete tubulin molecule (Llorca *et al.*, 2000). In the case of actin, a mutational analysis has pointed to the proposed CCT-binding sites being located at the tip of the large domain as the major determinants of CCT binding (McCormack *et al.*, 2001a). This result is reinforced by biochemical and electron microscopy studies carried out with a mutant in a conserved residue located in the putative hinge between the small and large domains that are far apart

when bound to CCT (McCormack *et al.*, 2001b). The mutation (G150P), which was suspected to induce rigidity in the hinge and prevent the opening of the actin molecule, resulted in the accumulation of the actin mutant on the chaperonin. The electron microscopy analysis of this G150P mutant complexed to CCT reveals that it is tightly packed when bound to the chaperonin and that its binding occurs through CCT β or CCT ϵ , but not CCT δ . The results indicate that the CCT-binding regions present in the large domain of actin drive the interaction with CCT (through CCT β or CCT ϵ subunits). Owing to the loss of flexibility induced by the presence of proline in the actin hinge, the molecule cannot open its structure to interact with both sides of the CCT cavity and thus accumulates in the chaperonin. CCT β or CCT ϵ seem to be the subunits with the highest substrate affinity, and this notion is strengthened by immunoprecipitation experiments of CCT–actin complexes, subsequently disrupted with detergent buffers, that show these two CCT subunits are amongst the strongest actin binders (Hynes and Willison, 2000).

Finally, although it has been hypothesized that the hydrophobic residues are those responsible for the interaction between the two cytoskeletal proteins and the cytosolic chaperonin (Dobrzynski *et al.*, 1996, 2000; Rommelaere *et al.*, 1999), and even if the role of certain hydrophobic residues in CCT binding cannot be ruled out, it is becoming evident that the interaction of actin and tubulin (and perhaps other substrates) with CCT occurs mainly through the co-operation of polar and electrostatic interactions [Plate 3(A, C and D)]. An analysis of the actin and tubulin residues putatively involved in CCT binding has revealed that a majority of them are charged or polar and a mutational analysis carried out in actin has shown that the stretch of residues F200–S201–T202–T203, mostly of polar nature, and the charged and extremely conserved residue D244, contribute substantially to CCT binding (McCormack *et al.*, 2001a).

Mechanism of actin and tubulin folding mediated by CCT

From the results described above and others, a substrate recognition and folding mechanism for CCT which is utterly different than that described for GroEL, begins to emerge. The open, substrate-receptive conformation of CCT [Plate 3(A)] recognizes and binds a substrate that has already acquired a large degree of native folding [Plate 2(C) and (E)], either by itself or with the help of other chaperones such as PFD. This recognition seems to occur through the upper part of the apical domain [bottom figures in Plate 2(C and E)], including the base of the helical protrusion, in a region that is predominantly populated in all eight different CCT subunits by charged and polar residues [Plate 3(A–C); Pappenberger *et al.*, 2002], which suggests a specific interaction between the chaperonin and the two cytoskeletal proteins. This notion is reinforced by the fact that the proposed CCT-binding regions in actin and tubulin are also predominantly composed of charged and polar residues [Plate 3(C)], and confirmed by immunomicroscopy experiments that show that certain regions of actin and tubulin

interact with specific CCT subunits [Plate 2(A and B)]. The interaction between the CCT-binding regions of the two proteins and the substrate-binding regions of the CCT subunits is probably of a weak nature, except perhaps for some CCT-binding regions that may lead to the initial recognition and binding process. Interestingly, these higher-affinity binding sites are located in the C-terminal domain of both actin [the large domain could be considered as such; see legend to Plate 2(A)] and tubulin (residues E195–R206 and T229–I250 in actin and residues S277–V288 and V355–P359 in tubulin) and interact with either CCT β or CCT ϵ (Llorca *et al.*, 2001a), which have also been shown to have the strongest binding affinity towards the two cytoskeletal proteins. Therefore, it is tempting to suggest that this is the first step in the recognition process, which is then followed by the cooperative binding of the rest of the CCT-interacting sites.

How does folding of actin and tubulin occur? Electron microscopy studies have shown that, upon ATP binding, CCT undergoes a conformational change in the apical domains that together act like an iris and close the chaperonin cavity using the helical protrusions, similar to what happens with the archaeal chaperonins [Plate 2(D and F)]. An important difference with the rest of the chaperonins is that genetic experiments on the ATP binding site of different CCT subunits have revealed that the conformational change in the apical domains is not concerted like in GroEL (Horovitz *et al.*, 2001) but rather of a sequential nature, and probably starting at CCT α (Lin and Sherman, 1997). ATP binding and the subsequent and approximate 70° clockwise movement of the apical domain (Llorca *et al.*, 1999a, 2001) would proceed sequentially throughout the CCT subunits [CCT α → CCT γ → CCT β → CCT ζ ; this is the order obtained with the mutational analysis of CCT subunits in yeast; Lin and Sherman, 1997; see arrows in Plate 2(C and E)]. This conformational change would push the substrate towards the centre of the cavity [Plate 2(D and F)]. In both actin and tubulin, the small and N-terminal domains would respectively be the first to undergo such forced movement, pushing them towards the large and C-terminal domains, the last to undergo the movement of the apical domain and the ones with strongest binding affinity (Llorca *et al.*, 2001). When this occurs, the N-terminal domain has already been liberated from CCT and interacts with the C-terminal domain. The outcome of all this complex set of movements is that, unlike what happens with GroEL, actin and tubulin are not liberated in the CCT cavity. They remain bound to the apical domains of some of the CCT subunits, through interactions with their C-terminal domains, having acquired in the process their native conformations [Plate 2(D and F); Llorca *et al.*, 2001]. This result from electron microscopy agrees with the finding by Hynes and Willison (2000) of a third CCT-binding domain in actin (site III) at the junction of the small and large domains, which could perhaps be used to stabilize its binding to CCT after the ATP-induced conformational change in the chaperonin. This interaction could be stabilized by the charged residues present in the inner surface of the chaperonin dome [Plate 3(B)]. Nothing is known about the mechanism of substrate liberation, but it is likely to occur subsequent to conformational changes that generate the re-opening of the

CCT cavity and/or with the help of some cofactors. Taken together, the results described here suggest that CCT has evolved from a chaperonin with a more passive folding mechanism, as is the case of GroEL which liberates the substrate into the cavity allowing its auto-folding, into one with a more active mechanism whereby the ATP-induced movements of its apical domains force the folding of the two cytoskeletal proteins.

It is clear that CCT is stringent in the folding of both actin and tubulin (Willison, 1999), but what is the contribution of the above described process to the folding pathway of both cytoskeletal proteins? It is possible that the eukaryotic chaperonin may have evolved to help both cytoskeletal proteins to overcome a kinetic barrier in their folding processes by stabilizing at first an open, quasi-native conformation, and subsequently inducing the final steps in folding by placing the two topological domains of the two proteins in the correct position. Both cytoskeletal proteins share common structural features, with two topological domains connected by a linker, and a nucleotide binding site located between the two domains which holds most of the inter-domain bonds. It is tempting to suggest that the critical step in the folding of actin and tubulin may have to do with the correct folding of the nucleotide binding site. In the case of actin, it has been shown that the native conformation depends on the occupancy of the nucleotide binding site (Schüler *et al.*, 2000), and biochemical studies with CCT and tubulin have shown that one of the functions of GTP is to stabilize the tubulin molecule during the folding process (Tian *et al.*, 1995b).

An interesting point is that the putative CCT-binding sites of actin and tubulin are all located in exposed loops of their native structures [Plate 2(A and B)], and most of them are not present in their respective prokaryote homologues (MreB and FtsA in the case of actin, and FtsZ in the case of tubulin; Llorca *et al.*, 2001a; van den Ent *et al.*, 2001; Andreu *et al.*, 2002). These bacterial proteins successfully fold themselves without the concurrence of any chaperone, but they are not capable of generating sophisticated polymer systems like their eukaryotic counterparts. Since the actin filaments and the microtubules are a basic feature of the eukarya kingdom, and CCT seems to have evolved to completion in the early stages of eukaryote evolution (Kubota *et al.*, 1994; Willison and Horwich, 1996; Willison, 1999), it has been hypothesized that CCT evolved from a primordial chaperonin to deal with the folding and regulation problems that appeared in eukaryotes at the same time as actin and tubulin evolved from their respective predecessors (Willison, 1999; Llorca *et al.*, 2000). It is possible that the evolution of a complex CCT-dependent folding pathway for actins and tubulins generated cytoskeletal polypeptides with biophysical properties that differ from those of their bacterial relatives (Llorca *et al.*, 2001a).

Other CCT-interacting proteins

It seems evident now that CCT interacts with more proteins than actin and tubulin (see Willison and Grantham, 2001;

Dunn *et al.*, 2001; Valpuesta *et al.*, 2002 for a more comprehensive study on the proteins cited below). Some of these proteins are cytoskeletal proteins such as cofilin, the actin-depolymerizing factor-1 (ADF1), actin-related proteins (ARPs) and the heavy meromyosin subunit (HMM). Other CCT-binding proteins are involved in various and important cellular processes, such as G_α-transducin (signal transduction) and its inhibitor phosphodiesterase-like protein (PhLP), Cyclin E (involved in the control of cell cycle), several histone deacetylases (HDACs, involved in the regulation of gene expression; Guenther *et al.*, 2002), and the Von Hippel-Lindau tumour suppressor protein (VHL; Feldman *et al.*, 1999), which is associated with a number of different types of cancer. Other proteins included viral proteins that are assisted in their folding by CCT, and a large number of proteins involved in many different cellular processes, and which have in common to contain WD40 motifs. Some of these proteins have molecular masses higher than 50 kDa, and it is therefore unlikely that they are folded by CCT inside the cavity, which suggests that the cytosolic chaperonin may have a function other than its assistance in their folding.

Other CCT-interacting proteins include some molecular chaperones such as Hsp70 (Feldman *et al.*, 1999), Hop/p60 (Gebauer *et al.*, 1998). However, there is only structural information available on the interaction between CCT and PFD, which as discussed previously, binds to the cytosolic chaperonin to transfer unfolded actin and tubulin (Vainberg *et al.*, 1998). Both CCT and PFD have evolved from their respective predecessors towards a hetero-oligomerization, probably forced by a specialization in their function. Thus, both the thermosome and the archaeal PFD are composed of a small number of different subunits (1–3 in the case of the thermosome, 2 in the case of PFD) and interact *in vitro* with any kind of unfolded polypeptide, whereas CCT and the eukaryotic PFD are composed of eight and six different subunits, respectively, and interact with a limited number of substrates (Martín-Benito *et al.*, 2002). This evolution towards hetero-oligomerization seems to be accompanied by the interaction between specific CCT and PFD subunits. This interaction takes place at the level of the apical domains probably in the same region where substrate binding occurs. The notion that a specific interaction occurs between both chaperones is strengthened by the evolution of the putative chaperonin binding site of PFD, from a domain composed mostly of hydrophobic residues in the archaeal PFD, to a domain highly charged in the eukaryotic counterpart (Martín-Benito *et al.*, 2002).

In conclusion, additional high-resolution structural and functional information on the interaction between CCT and its various substrates is needed before a clear picture of the substrate recognition mechanism and the folding cycle of this exciting molecular machine can be presented.

Acknowledgements

This work was supported by grants from the MCYT (J.M.V. and J.L.C.) and Fundación 'Ramón Areces' (P.G.-P). K.R.W. is supported by Cancer Research UK.

REFERENCES

- Andreu JM, Oliva MA, Monasterio O. 2002. Reversible unfolding of FtsZ cell division proteins from Archaea and Bacteria. *J. Biol. Chem.* **277**: 43262–43270.
- Aoki K, Taguchi H, Shindo Y, Yoshida M, Ogasahara K, Yutani K, Tanaka N. 1997. Calorimetric observation of a GroEL-protein binding reaction with little contribution of hydrophobic interaction. *J. Biol. Chem.* **272**: 32158–32162.
- Archibald JM, Logsdon JM Jr, Doolittle WF. 2000. Origin and evolution of eukaryotic chaperonins: phylogenetic evidence for ancient duplications in CCT genes. *Mol. Biol. Evol.* **17**: 1456–1466.
- Archibald JM, Blouin C, Doolittle WF. 2001. Gene duplications and the evolution of group II chaperonins: implications for structure and function. *J. Struct. Biol.* **135**: 157–169.
- Badcoe IG, Smith CJ, Wood S, Halsall DJ, Holbrook JJ, Lund PA, Clarke AR. 1991. Binding of a chaperonin to the folding intermediate of lactate dehydrogenase. *Biochemistry* **30**: 9195–9200.
- Braig K, Simon M, Furaya F, Hainfeld JF, Horwich AL. 1993. A polypeptide bound by the chaperonin GroEL is localized within a central cavity. *Proc. Natl Acad. Sci. USA* **90**: 3978–3982.
- Braig K, Otwinowski Z, Hegde R, Boisvert DC, Joachimiak A, Horwich AL, Sigler PB. 1994. The crystal structure of the bacterial chaperonin GroEL at 2.8 Å. *Nature* **371**: 578–586.
- Buckle AM, Zahn R, Fersht AR. 1997. A structural model for GroEL-polypeptide recognition. *Proc. Natl Acad. Sci. USA* **94**: 3571–3575.
- Bukau B, Horwich AL. 1998. The hsp70, hsp60 chaperone machines. *Cell* **92**: 351–366.
- Carrascosa JL, Llorca O, Valpuesta JM. 2001. Structural comparison of prokaryotic, eukaryotic chaperonins. *Micron* **32**: 43–50.
- Chen L, Sigler PB. 1999. The crystal structure of a GroEL/peptide complex: plasticity as a basis for substrate recognition. *Cell* **99**: 757–768.
- Chen S, Roseman AM, Hunter AS, Wood SP, Burston SG, Ranson NA, Clarke AR, Saibil HR. 1994. Location of a folding protein and shape changes in GroEL-GroES complexes imaged by cryo-electron microscopy. *Nature* **371**: 261–264.
- Chen X, Sullivan DS, Huffaker TC. 1993. Two yeast genes with similarity to TCP-1 are required for microtubule and actin function *in vivo*. *Proc. Natl Acad. Sci. USA* **91**: 9111–9115.
- Cowan NJ, Lewis SA. 2002. Type II chaperonins, prefoldin and the tubulin-specific chaperones. *Adv. Prot. Chem.* **59**: 73–104.
- Coyle JE, Jaeger J, Gross M, Robinson CV, Radford SE. 1997. Structural and mechanistic consequences of polypeptide binding by GroEL. *Fold. Des.* **2**: R93–R104.
- Crouy-Chanel A, El Yaagoubi A, Kohiyama M, Richarme G. 1995. Reversal by GroES of the GroEL preference from hydrophobic amino acids toward hydrophilic amino acids. *J. Biol. Chem.* **270**: 10571–10575.
- Ditzel L, Löwe J, Stock D, Stetter KO, Huber H, Huber R, Steinbacher S. 1997. Crystal structure of the thermosome, the archaeal chaperonin and homologue of CCT. *Cell* **93**: 125–138.
- Dobrzynski JK, Sternlicht ML, Farr GW, Sternlicht H. 1996. Newly-synthesized β -tubulin demonstrates domain-specific interactions with the cytosolic chaperonin. *Biochemistry* **35**: 15870–15882.
- Dobrzynski JK, Sternlicht ML, Peng I, Farr GW, Sternlicht H. 2000. Evidence that β -tubulin induces a conformational change in the cytosolic chaperonin which stabilizes binding: implications for the mechanism of action. *Biochemistry* **39**: 3988–4003.
- Dunn AY, Melville MW, Frydman J. 2001. Cellular substrates of the eukaryotic chaperonin TriC/CCT. *J. Struct. Biol.* **135**: 176–184.
- Ellis RJ. 1994. Opening and closing the Anfinsen cage. *Curr. Biol.* **4**: 633–635.
- Ellis RJ. 1996. *The Chaperonins*. Academic Press: San Diego, CA.
- Ellis RJ, Hartl FU. 1999. Principles of protein folding in the cellular environment. *Curr. Opin. Struct. Biol.* **9**: 102–110.
- Farr GW, Furtak K, Rowland MB, Ranson NA, Saibil HR, Kirchhausen T, Horwich AL. 2000. Multivalent binding of nonnative substrate proteins by the chaperonin GroEL. *Cell* **100**: 561–573.
- Feldman DE, Thulasiraman V, Ferreyra RG, Frydman J. 1999. Formation of the VHL-elongin BC tumor suppressor complex is mediated by the chaperonin TriC. *Mol. Cell* **4**: 1051–1061.
- Fenton WA, Kashi Y, Furtak K, Horwich AL. 1994. Residues in chaperonin GroEL required for polypeptide binding and release. *Nature* **371**: 614–619.
- Frydman J, Nimmegern E, Erdjument-Bromage H, Wall JS, Tempst P, Hartl FU. 1992. Function in protein folding of TriC, a cytosolic ring complex containing TCP-1 and structurally related subunits. *EMBO J.* **11**: 4767–4778.
- Gao Y, Thomas JO, Chow RL, Lee GH, Cowan NJ. 1992. A cytoplasmic chaperonin that catalyzes beta-actin folding. *Cell* **69**: 1043–50.
- Gebauer M, Melki R, Gehring U. 1998. The chaperone cofactor Hop/p60 interacts with the cytosolic chaperonin-containing TCP-1 and affects its nucleotide exchange and protein folding activities. *J. Biol. Chem.* **273**: 29475–29480.
- Geissler S, Siegers K, Schiebel E. 1998. A novel protein complex promoting formation of functional alpha- and gamma-tubulin. *EMBO J.* **17**: 952–966.
- Grantham J, Llorca O, Valpuesta JM, Willison KR. 2000. Partial occlusion of both cavities of CCT with antibody has no effect upon the rates of β -actin or α -tubulin folding. *J. Biol. Chem.* **275**: 4587–4591.
- Guagliardi A, Cerchia L, Rossi M. 1995. Prevention of in vitro protein thermal aggregation by the *Sulfolobus solfataricus* chaperonin. *J. Biol. Chem.* **270**: 28126–28132.
- Guenther MG, Yu J, Kao GD, Yeu TJ, Lazar MA. 2002. Assembly of the SMRT-histone deacetylase 3 repression complex requires the TCP-1 ring complex. *Gen. Dev.* **16**: 3130–3135.
- Guex N, Peitsch MC. 1997. SWISS-MODEL and the Swiss-PdbViewer: an environment for comparative protein modelling. *Electrophoresis* **18**: 2714–2723.
- Gutsche I, Essen LO, Baumeister W. 1999. Group II chaperonins: new TRIC(k)s and turns of a protein folding machine. *J. Mol. Biol.* **293**: 295–312.
- Gutsche I, Holzinger J, Röble M, Heumann H, Baumeister W, May RP. 2000. Conformational rearrangements of an archaeal chaperonin upon ATPase cycling. *Curr. Biol.* **10**: 405–408.
- Gutsche I, Holzinger J, Rauh N, Baumeister W, May RP. 2001. ATP-induced structural change of the thermosome is temperature-dependent. *J. Struct. Biol.* **135**: 139–146.
- Hayer-Hartl M, Ewbank JJ, Chreighton TE, Hartl FU. 1994. Conformational specificity of the chaperonin GroEL for the compact folding intermediates of α -lactalbumin. *EMBO J.* **13**: 3192–3202.
- Hlodan R, Tempst P, Hartl FU. 1995. Binding of defined regions of a polypeptide to GroEL and its implications for chaperonin-mediated protein folding. *Nat. Struct. Biol.* **2**: 587–595.
- Holm L, Sander C. 1993. Protein structure comparison by alignment of distance matrices. *J. Mol. Biol.* **233**: 123–138.
- Horovitz A, Fridmann Y, Kafri G, Yifrach O. 2001. Allosteric in chaperonins. *J. Struct. Biol.* **135**: 104–114.
- Houry WA, Frishman D, Eckerskorn F, Lottspeich F, Hartl FU. 1999. Identification of in vivo substrates of chaperonin GroEL. *Nature* **402**: 147–154.
- Hutchinson JP, Oldham TC, Elthaler TSH, Miller AD. 1997. Electrostatic as well as hydrophobic interactions are important for the association of cpn60 (GroEL) with peptides. *J. Chem. Soc., Perkin Trans. 2*: 279–288.
- Hynes GM, Willison KR. 2000. Individual subunits of the chaperonin containing TCP-1 (CCT) mediate interactions with binding sites located on subdomains of β -actin. *J. Biol. Chem.* **275**: 18985–18994.

- Itzhaki LS, Otzen DE, Fersht AR. 1995. Nature and consequences of GroEL-protein interactions. *Biochemistry* **34**: 14591–14587.
- Kabsch W, Mannherz HG, Suck D, Pai EF, Holmes KC. 1990. Atomic structure of the actin: DNase I complex. *Nature* **347**: 37–44.
- Katsumata K, Okazaki A, Tsurupa GP, Kwajima K. 1996. Dominant forces in the recognition of a transient folding intermediate of α -lactalbumin by GroEL. *J. Mol. Biol.* **264**: 643–649.
- Klumpp M, Baumeister W, Essen LO. 1997. Structure of the substrate binding domain of the thermosome, an archaeal group II chaperonin. *Cell* **91**: 263–270.
- Kubota H, Hynes G, Carne A, Asworth A, Willison KR. 1994. Identification of six TCP-1 related genes encoding divergent subunits of the TCP-1 containing chaperonin. *Curr. Biol* **4**: 89–99.
- Landry SJ, Gierash LM. 1991. The chaperonin GroEL binds a polypeptide in an α -helical conformation. *Biochemistry* **30**: 7359–7362.
- Landry SJ, Jordan R, McMacken R, Gieras LM. 1992. Different conformations of the same polypeptide bound to chaperones DnaK and GroEL. *Nature* **355**: 455–457.
- Landry SJ, Zeilstra-Ryalls J, Fayet O, Georgopoulos C, Gierash LM. 1993. Characterization of an important mobile domain of GroES. *Nature* **364**: 255–258.
- Lewis SA, Tian G, Vainberg IE, Cowan NJ. 1996. Chaperonin-mediated folding of actin and tubulin. *J. Cell Biol.* **132**: 1–4.
- Lewis VA, Hynes GM, Zheng D, Saibil H, Willison K. 1992. T-complex polypeptide-1 is a subunit of a heteromeric particle in the eukaryotic cytosol. [See comments.] *Nature* **358**: 249–252.
- Lin P, Sherman F. 1997. The unique hetero-oligomeric nature of the subunits in the catalytic cooperativity of the yeast Cct chaperonin complex. *Proc. Natl Acad. Sci. USA* **94**: 10780–10785.
- Lin S, Schwartz FP, Eisenstein E. 1995. The hydrophobic nature of GroEL-substrate binding. *J. Biol. Chem.* **270**: 1011–1014.
- Liou AK, Willison KR. 1997. Elucidation of the subunit orientation in CCT (chaperonin containing TCP1) from the subunit composition of CCT micro-complexes. *EMBO J.* **16**: 4311–4316.
- Llorca O, Smyth MG, Marco S, Carrascosa JL, Willison KR, Valpuesta JM. 1998. ATP binding induces large conformational changes in the apical and equatorial domains of the eukaryotic cytoplasmic chaperonin (CCT). *J. Biol. Chem.* **273**: 10091–10094.
- Llorca O, Smyth MG, Carrascosa JL, Willison KR, Radermacher M, Steinbacher S, Valpuesta JM. 1999a. 3D reconstruction of the ATP-bound form of CCT reveals the asymmetric folding conformation of a type II chaperonin. *Nat. Struct. Biol.* **6**: 639–642.
- Llorca O, McCormack E, Hynes G, Grantham J, Cordell J, Carrascosa JL, Willison KR, Fernández JJ, Valpuesta JM. 1999b. Eukaryotic type II chaperonin CCT interacts with actin through specific subunits. *Nature* **402**: 693–696.
- Llorca O, Martín-Benito J, Ritco-Vonsovici M, Grantham J, Hynes G, Willison KR, Carrascosa JL, Valpuesta JM. 2000. Eukaryotic chaperonin CCT stabilizes actin and tubulin folding intermediates in open quasi-native conformations. *EMBO J.* **19**: 5971–5979.
- Llorca O, Martín-Benito J, Gomez-Puertas P, Ritco-Vonsovici M, Willison KR, Carrascosa JL, Valpuesta JM. 2001a. Analysis of the interaction between the eukaryotic chaperonin CCT and its substrates actin and tubulin. *J. Struct. Biol.* **135**: 205–218.
- Llorca O, Martín-Benito J, Grantham J, Ritco-Vonsovici M, Willison KR, Carrascosa JL, Valpuesta JM. 2001b. The 'sequential allosteric ring' mechanism in the eukaryotic chaperonin-assisted folding of actin and tubulin. *EMBO J.* **20**: 4065–4075.
- Martin J, Langer T, Boteva R, Schramel A, Horwich AL, Hartl FU. 1991. Chaperonin-mediated protein folding at the surface of GroEL through a 'molten globule'-like intermediate. *Nature* **352**: 36–42.
- Martin-Benito J, Boskovic J, Gómez-Puertas P, Carrascosa JL, Simons C, Lewis SA, Bartolini F, Cowan NC, Valpuesta JM. 2002. Structure of eukaryotic prefoldin and of its complexes with unfolded actin and the cytosolic chaperonin CCT. *EMBO J.* **21**: 6377–6386.
- McCormack E, Rohman M, Willison KR. 2001a. Mutational screen identifies critical amino acid residues of β -actin mediating interaction between folding intermediates and cytosolic chaperonin TCP-1. *J. Struct. Biol.* **135**: 185–197.
- McCormack E, Llorca O, Carrascosa JL, Valpuesta JM, Willison KR. 2001b. Point mutations in a hinge linking the small and large domains of β -actin result in trapped folding intermediates bound to cytosolic chaperonin containing TCP-1. *J. Struct. Biol.* **135**: 198–204.
- Melki R, Cowan NJ. 1994. Facilitated folding of actins and tubulins occurs via a nucleotide-dependent interaction between cytoplasmic chaperonin and distinctive folding intermediates. *Mol. Cell. Biol.* **14**: 2895–2904.
- Mogk A, Bukau B, Deuerling E. 2001. Cellular functions of cytosolic *E. coli* chaperones. In *Molecular Chaperones in the Cell*, Lund P (ed.). Oxford University Press: Oxford; 1–34.
- Nicholls A, Sharp KA, Honig B. 1991. Protein folding and association: insights from the interfacial and thermodynamic properties of hydrocarbons. *Proteins* **11**: 281–296.
- Nitsch M, Walz J, Typke D, Klumpp M, Essen LO, Baumeister W. 1998. Group II chaperonin in an open conformation examined by electron tomography. *Nat. Struct. Biol.* **5**: 855–857.
- Nogales E, Wolf SG, Downing KH. 1998a. Structure of the $\alpha\beta$ tubulin dimer by electron crystallography. *Nature* **391**: 199–203.
- Nogales E, Downing KH, Amos LA, Löwe J. 1998b. Tubulin and FtsZ form a distinct family of GTPases. *Nat. Struct. Biol.* **5**: 451–458.
- Pappenberger G, Wilsher JA, Roe SM, Counsell DJ, Willison KR, Pearl LH. 2002. Crystal structure of the CCT γ apical domain: implications for substrate binding to the eukaryotic cytosolic chaperonin. *J. Mol. Biol.* **318**: 1367–1379.
- Phipps BM, Hoffmann A, Stetter KO, Baumeister W. 1991. A novel ATPase complex selectively accumulated upon heat shock is a major cellular component of thermophilic archaeobacteria. *EMBO J.* **10**: 1711–1722.
- Richarme G, Kohiyama M. 1994. Amino acid specificity of the *Escherichia coli* chaperone GroEL (heat shock protein 60). *J. Biol. Chem.* **269**: 7095–7098.
- Ritco-Vonsovici M, Willison KR. 2000. Defining the eukaryotic chaperonin-binding sites in human tubulins. *J. Mol. Biol.* **304**: 81–98.
- Robinson CV, Gross M, Eyles SJ, Ewbank JJ, Mayhew M, Hartl FU, Dobson CM, Radford SE. 1994. Conformation of GroEL-bound α -lactalbumin probed by mass spectrometry. *Nature* **372**: 646–651.
- Rommelaere H, van Troys M, Gao Y, Melki R, Cowan NJ, Vandekerckhove J, Ampe C. 1993. Eukaryotic cytosolic chaperonin contains t-complex polypeptide 1 and seven related subunits. *Proc. Natl Acad. Sci. USA* **90**: 11975–11979.
- Rommelaere H, De Neve M, Melki R, Vandekerckhove J, Ampe C. 1999. The cytosolic class II chaperonin CCT recognizes delineated hydrophobic sequences in its target proteins. *Biochemistry* **38**: 3246–3257.
- Schoehn G, Quaitte-Randall E, Jimenez JL, Joachimiak A, Saibil HR. 2000a. Three conformations of an archaeal chaperonin, TF55 from *Sulfolobus shibatae*. *J. Mol. Biol.* **296**: 813–819.
- Schoehn G, Hayes M, Cliff M, Clarke AR, Saibil HR. 2000b. Domain rotations between open, closed and bullet-shaped forms of the thermosome, an archaeal chaperonin. *J. Mol. Biol.* **301**: 323–332.
- Schüler H, Lindberg U, Schutt CE, Karlsson R. 2000. Thermal unfolding of G-actin monitored with the Dnase I-inhibition assay. *Eur. J. Biochem.* **267**: 476–486.
- Shitlerman M, Lorimer GH, Englander SW. 1999. Chaperonin function: folding by forced unfolding. *Science* **284**: 822–825.
- Tian G, Vainberg IE, Tap WD, Lewis SA, Cowan NJ. 1995a. Specificity in chaperonin-mediated protein folding. *Nature* **375**: 250–253.
- Tian G, Vainberg IE, Tap WD, Lewis SA, Cowan NJ. 1995b. Quasi-native chaperonin-bound intermediates in facilitated protein folding. *J. Biol. Chem.* **270**: 23910–23913.

- Vainberg IE, Lewis SA, Rommelaere H, Ampe C, Vandekerckhove J, Klein HL, Cowan NJ. 1998. Prefoldin, a chaperone that delivers unfolded proteins to cytosolic chaperonin. *Cell* **93**: 863–873.
- Valpuesta JM, Martín-Benito J, Gómez-Puertas P, Carrascosa JL, Willison KR. 2002. Structure and function of a protein folding machine: the eukaryotic cytosolic chaperonin CCT. *FEBS Lett.* **529**: 11–16.
- van den Ent F, Amos LA, Löwe J. 2001. Prokaryotic origin of the actin cytoskeleton. *Nature* **413**: 39–44.
- Wang J, Boisvert DC. 2003. Structural basis for GroEL-assisted protein folding from the crystal structure of (GroEL-KMgATP)₁₄ at 2.0 Å resolution. *J. Mol. Biol.* **327**: 843–855.
- Walther S, Lorimer GH, Schmid FX. 1996. A thermodynamic coupling mechanism for GroEL-mediated unfolding. *Proc. Natl Acad. Sci. USA* **93**: 9425–9430.
- Willison KR. 1999. Composition and function of the eukaryotic cytosolic chaperonin-containing TCP1. In *Molecular Chaperones and Folding Catalysts*, Bukau B (ed.). Harwood Academic: Amsterdam; 555–571.
- Willison KR, Grantham J. 2001. *Molecular Chaperones: Frontiers in Molecular Biology*, Lund P (ed.). Oxford University Press: Oxford; 90–118.
- Willison KR, Horwich AL. 1996. Structure and function of chaperonins. In *The Chaperonins*, Ellis RJ (ed.). Academic Press: San Diego, CA; 107–135.
- Xu Z, Horwich AL, Sigler PB. 1997. The crystal structure of the asymmetric GroEL-GroES-(ADP)₇ chaperonin complex. *Nature* **388**: 741–750.
- Yaffe MB, Farr GW, Miklos D, Horwich AL, Sternlicht ML, Sternlicht J. 1992. TCP1 complex is a molecular chaperone in tubulin biogenesis. *Nature* **358**: 245–248.
- Zahn R, Spitzfaden C, Ottiger M, Wüthrich K, Plückthun A. 1994. Destabilization of the complete protein secondary structure on binding to the chaperone GroEL. *Nature* **368**: 261–265.
- Zahn R, Perrett S, Fersht AR. 1996. Conformational states bound by the molecular chaperones GroEL and SecB—a hidden unfolding (annealing) activity. *J. Mol. Biol.* **261**: 43–61.