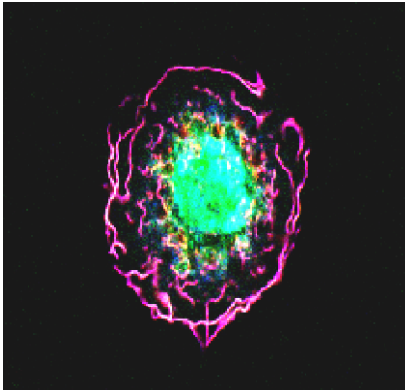


# POSTDOCTORAL POSITIONS

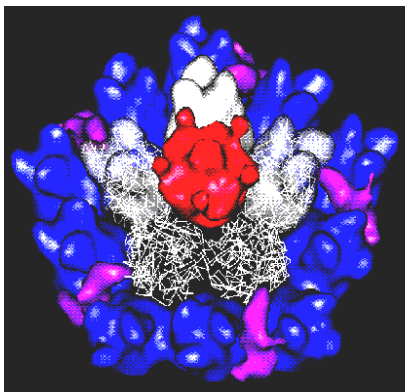
SALAMANCA CANCER RESEARCH CENTER

Salamanca, Spain

[www.cicancer.org](http://www.cicancer.org)

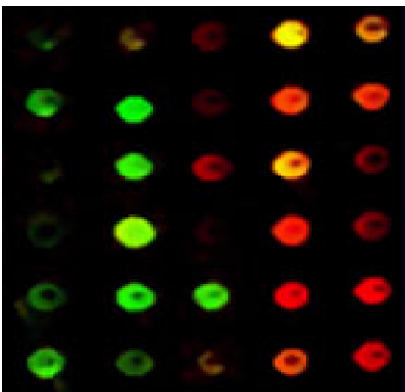


**TWO POSTDOCTORAL POSITIONS** are available at the laboratory of **Dr. XOSÉ R. BUSTELO** to study the role of Rho/Rac GEFs, Rho/Rac GTPases, and other cytoskeletal regulators in cancer growth and metastasis. Additional work in the lab is focused on other high incidence diseases such as cardiovascular and metabolic disorders, always using a signaling-, genomics-, and animal model-oriented research.



We are looking for postdoctoral fellows with experience in some of the following techniques: **(i)** Signal Transduction and Cell Biology. **(ii)** Molecular Oncology. **(iii)** Generation and work with genetically engineered mice.

Recent publications of our lab include Caloca *et al.* (2003) *EMBO J.* **22**: 3326; Llorca *et al.* (2005) *EMBO J.* **24**: 1330; Sauzeau *et al.* (2006) *Nature Medicine* **12**: 841; Sauzeau *et al.* (2007) *Mol. Biol. Cell.* **18**: 943; Ruiz *et al.* (2007) *Mol. Cell. Biol.* **27**: 8127; Mithivanan *et al.* (2008) *Nature Biotechnol.* **26**: 164. Delgado *et al.* (2009) *Nat. Immunol.* **10**: 880; Sauzeau *et al.* (2010) *J. Clin. Inv.* **120**: 315.



Further information about our lab and publications can be found at [www.cicancer.org/vergrupo.php?IdGrupo=3](http://www.cicancer.org/vergrupo.php?IdGrupo=3). Information about the city of Salamanca can be found at: [www.aboutsalamanca.com](http://www.aboutsalamanca.com).

Positions are available at any time in 2011.

Interested individuals should submit their **CVs** and at least **two letters of reference** by June 1st to the e-mail address indicated below:



**Dr. Xosé R. Bustelo**  
**Centro de Investigación del Cáncer**  
**Campus Unamuno s/n**  
**37007 Salamanca, Spain**  
**E-mail: [xbustelo@usal.es](mailto:xbustelo@usal.es)**